



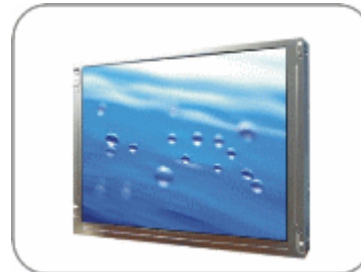
**DLF0835 / DLH0835**

**8.4" TFT LCD, LED Backlight 1000nits,SVGA**

8.4" TFT LCD panel, built-in 1000 nits high bright for sunlight readable LCD display, high transmittance color filter, high transmission polarizing plates, Low Power Consumption, suitable for kiosk, advertising, POS, marine, transportation, gaming, studio display, gas pump.

**Key Features**

- Sunlight Readable
- LED Backlight
- High Shock & Vibration Resistance
- Low Power Consumption
- Wide Operation Temp. (-30°C~80°C)
- High Uniformity (90%)
- Low EMI Noise
- Wide Dimming
- Life Expectancy (70,000hrs)



**Specifications**

V1

Model No.	DLF0835	DLH0835
Description	8.4" TFT LCD, LED Backlight 1000nits,SVGA	
Display Area (mm)	170.4x127.8 mm	
Brightness	1,000 cd/m <sup>2</sup>	
Resolution	800 x600 (SVGA)	
Contrast Ratio	600 : 1	
Pixel Pitch (mm)	0.213(H) x 0.213(V)	
Viewing Angle	+60°~-60°(H), +65°~-55°(V)	
Display Colors	16.2M	
Response Time (Typical)	30ms (Typical)	
Sync	LVDS	
Power Consumption	7W	
Dimensions (mm)	199.5x149.5x11.6	
Weight (Net)	380g	
LED Driving Board	LID 08A02	
Control Board (Optional)	<input type="checkbox"/> AD5621GA <input type="checkbox"/> AD5621GD <input type="checkbox"/> AD5766GDVA <input type="checkbox"/> AD2662GDVAR	
	<input type="checkbox"/> AD5621GA	VGA+Audio
	<input type="checkbox"/> AD5621GD	VGA+DVI
	<input type="checkbox"/> AD5766GDVA	VGA+CVBS+S-Video+Audio (Optional DVI / Component)
	<input type="checkbox"/> AD2662GDVAR	VGA+DVI (Optional S-Video/ Component / Audio)
F / R Control Button	<input type="checkbox"/> 5 Key <input type="checkbox"/> 4 Key	
	<input type="checkbox"/> 5 Key	Power Switch, Menu, Select (+,-), Auto
	<input type="checkbox"/> 4 Key	Power Switch, Menu, Select (+,-),
OSD Menu	Brightness, Contrast, H/V Position, Color, Phase, Clock...	
Optional	<input type="checkbox"/> AOT <input type="checkbox"/> Touch Screen <input type="checkbox"/> Waterproof	

Specifications are subject to change without notice.

All brands or product names are trademarks or registered trademarks of their respective companies.

**DLF**= Panel+LED Driving Board

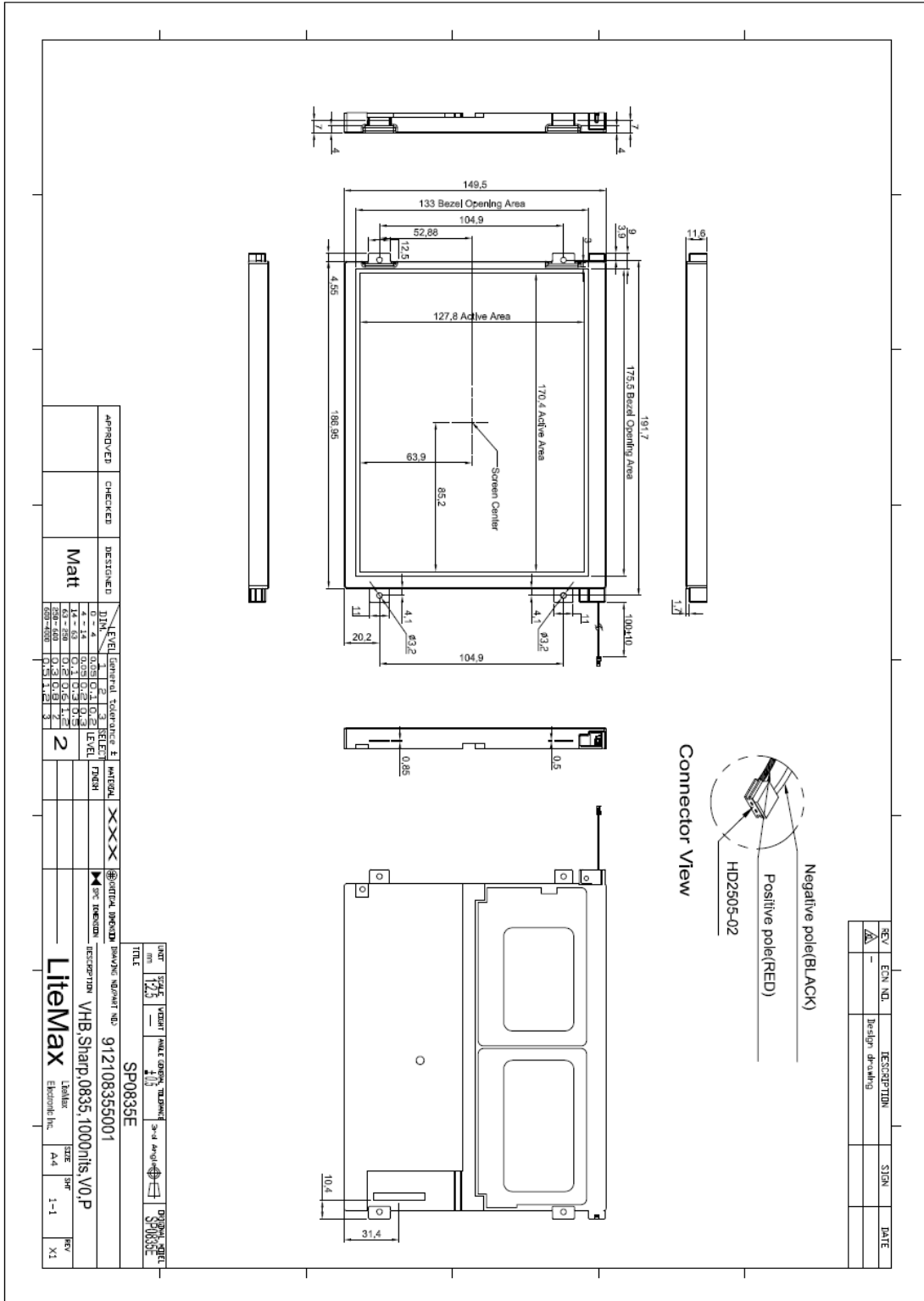
**DLH**= Panel+LED Driving Board+Control Board



# Mechanical Drawing

## Outline Dimensions

Unit:mm





### Ordering Information

Part Number	Description
<b>DLF0835-ENN-A01</b>	8.4",1000nits,SVGA,LID08A02.v01
<b>DLH0835-ENN-A01</b>	8.4",1000nits,SVGA.LID08A02,AD5621GA,V01
<b>DLH0835-ENN-B01</b>	8.4",1000nits,SVGA,LID08A02.AD5621GD,V01
<b>DLH0835-ENN-C01</b>	8.4",1000nits,SVGA,LID08A02.AD5621GD,V01
<b>OLF0835-EGN-A01</b>	8.4",1000nits,SVGA,LID08A02.AR glass.AOT,v01
<b>OLH0835-ETA-A01</b>	8.4",1000nits,SVGA.T/Liyi-RES/5W-USB.AD5621G,AOT-V1,V01

### Optional Accessories

Part Number	Description
<b>840612051100</b>	ADAPTER.12V.5A.60W.EA1050A,P
<b>810618301010</b>	CABLE.POWER.AC.1830mm USA type
<b>810618301090</b>	CABLE,POWER,AC,1830mm Europe type
<b>810618301050</b>	CABLE.POWER.AC.1830mm UK type
<b>810618301170</b>	CABLE.POWER,AC,1830mm Australia type
<b>810618301030</b>	CABLE.POWER.AC.1830mm Japan type