



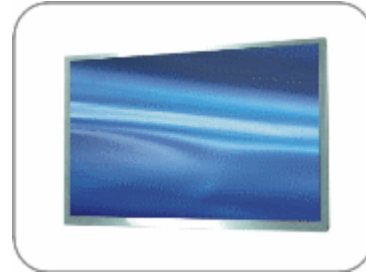
## DLF1315 / DLH1315

### 13.3" Wide TFT LCD, LED Backlight 1000nits,WXGA

13.3" TFT LCD panel, built-in 1000 nits high bright for sunlight readable LCD display, high transmittance color filter, high transmission polarizing plates, Low Power Consumption, suitable for kiosk, advertising, POS, marine, transportation, gaming, studio display, gas pump.

#### Key Features

- Sunlight Readable
- LED Backlight
- High Shock & Vibration Resistance
- Low Power Consumption
- Wide Operation Temperature. (-20°C ~ 70°C)
- High Uniformity (90%)
- Low EMI Noise
- Wide Dimming
- Life Expectancy (70,000hrs)



### Specifications

V2

Model No.	DLF1315	DLH1315
Description	13.3" Wide TFT LCD, LED Backlight 1000nits,WXGA	
Display Area (mm)	286.08 x 178.8mm	
Brightness	1000 cd/m <sup>2</sup>	
Resolution	1280 x 800 (WXGA)	
Contrast Ratio	800 : 1	
Pixel Pitch (mm)	0.2235(H) x 0.2235(V)	
Viewing Angle	+70°~-70°(H), +60°~-60°(V)	
Display Colors	262K	
Response Time (Typical)	16ms	
Sync	LVDS	
Power Consumption	7.5W	
Dimensions (mm)	299x195x7.7	
Weight (Net)	752g	
LED Driving Board	LID 13A02	
Control Board (Optional)	<input type="checkbox"/> AD5621GA <input type="checkbox"/> AD5621GD <input type="checkbox"/> AD5766GDVA <input type="checkbox"/> AD2662GDVAR	
<input type="checkbox"/> AD5621GA	VGA+Audio	
<input type="checkbox"/> AD5621GD	VGA+DVI	
<input type="checkbox"/> AD5766GDVA	VGA+CVBS+S-Video+Audio (Optional DVI / Component)	
<input type="checkbox"/> AD2662GDVAR	VGA+DVI (Optional S-Video/ Component / Audio)	
F / R Control Button	<input type="checkbox"/> 5 Key <input type="checkbox"/> 4 Key	
<input type="checkbox"/> 5 Key	Power Switch, Menu, Select (+,-), Auto	
<input type="checkbox"/> 4 Key	Power Switch, Menu, Select (+,-),	
OSD Menu	Brightness, Contrast, H/V Position, Color, Phase, Clock...	
Optional	<input type="checkbox"/> AOT <input type="checkbox"/> Touch Screen	

*Specifications are subject to change without notice.*

*All brands or product names are trademarks or registered trademarks of their respective companies.*

**DLF**= Panel+LED Driving Board

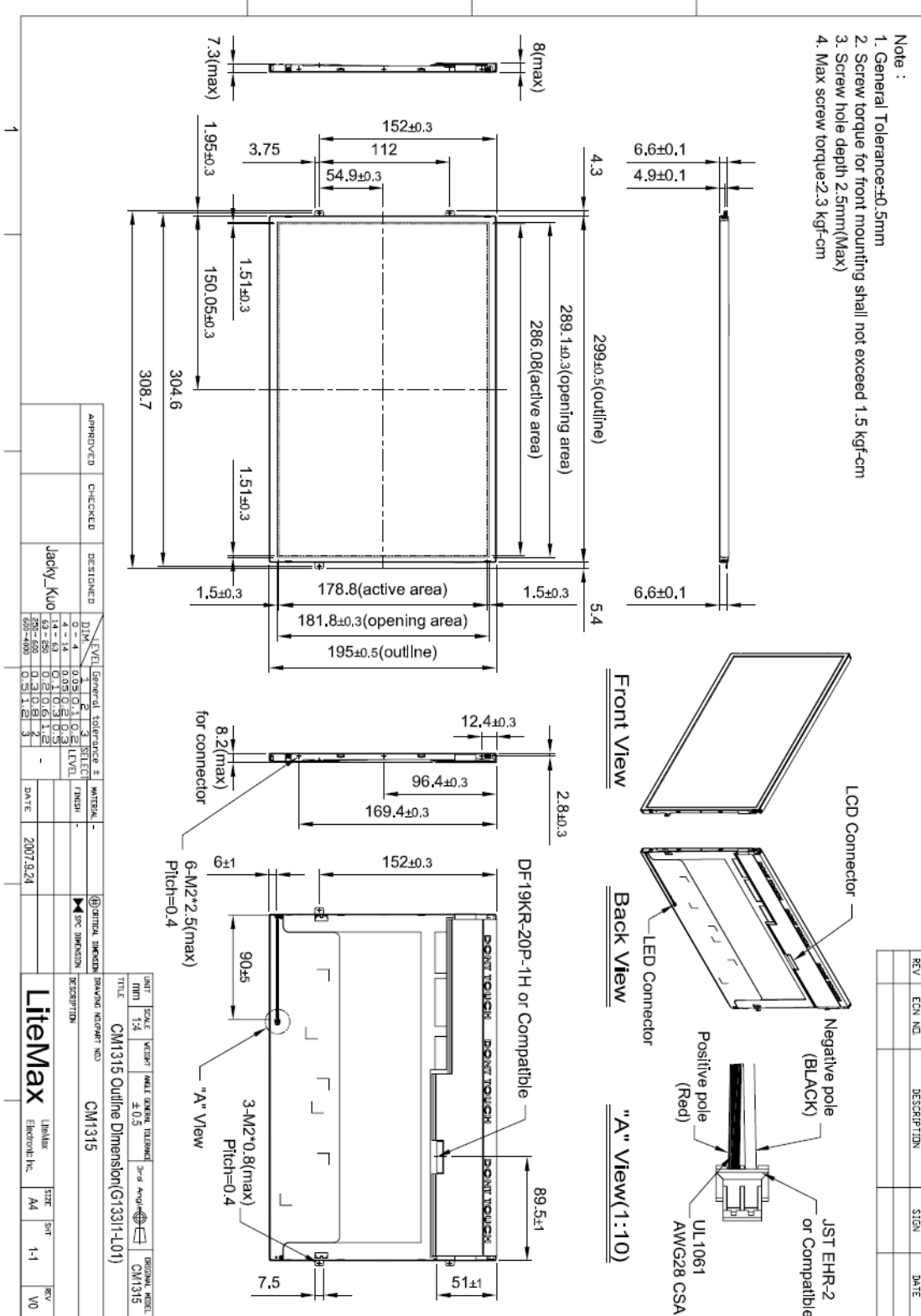
**DLH**= Panel+LED Driving Board+Control Board



## Mechanical Drawing

### Outline Dimensions

Unit:mm





### Ordering Information

Part Number	Description
<b>DLF1315-ENN-A01</b>	13.3",1000nits,WXGA,LID13A.V01
<b>DLF1315-ENN-A02</b>	13.3",1000nits,WXGA,LID13A.Light Bar Cable:310mm,V01
<b>DLF1315-ENN-A03</b>	13.3",1000nits,WXGA,w/o LID.Light Bar Cable:310mm,V01
<b>DLH1315-ENN-A01</b>	13.3",1000nits,WXGA,LID13A.AD5621GA,V01

### Optional Accessories

Part Number	Description
<b>840612051100</b>	ADAPTER.12V.5A.60W.EA1050A,P
<b>810618301010</b>	CABLE.POWER.AC.1830mm USA type
<b>810618301090</b>	CABLE,POWER,AC,1830mm Europe type
<b>810618301050</b>	CABLE.POWER.AC.1830mm UK type
<b>810618301170</b>	CABLE.POWER,AC,1830mm Australia type
<b>810618301030</b>	CABLE.POWER.AC.1830mm Japan type